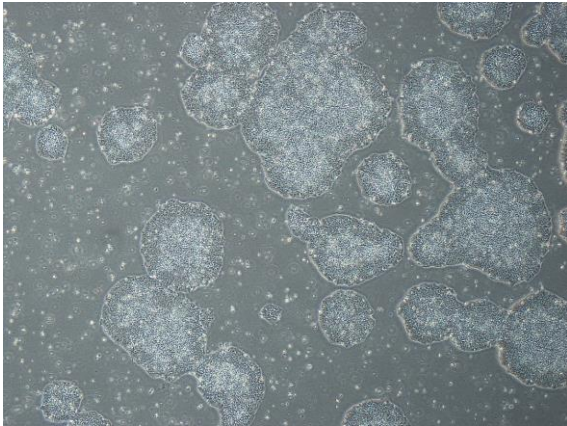
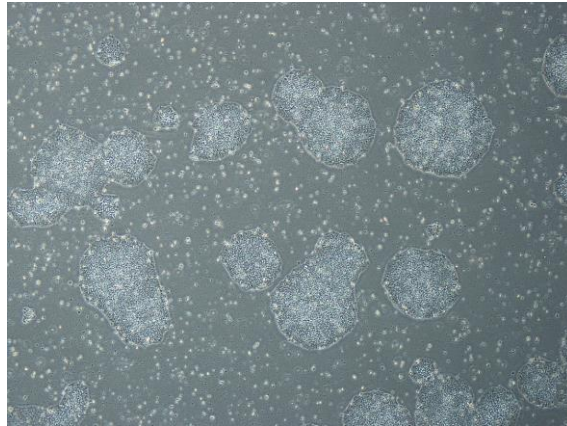


## 【 CiRA-j-1302 】 Morphology of iPSC colonies

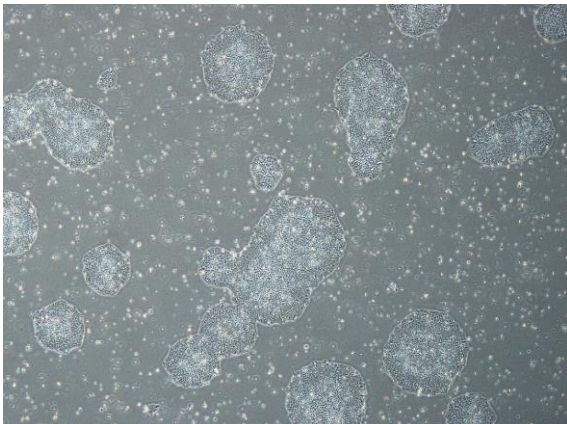
CiRA-j-1302-A: passage-3



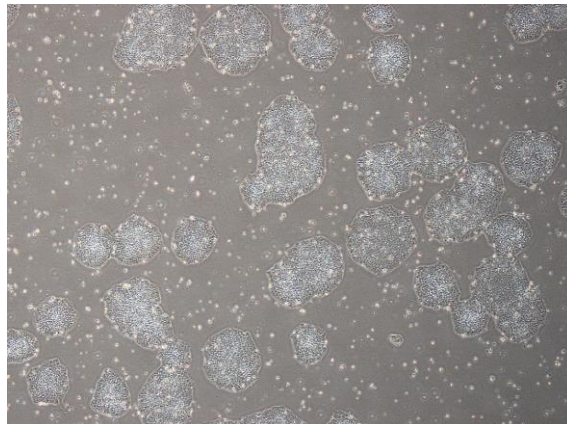
CiRA-j-1302-B: passage-4



CiRA-j-1302-C: passage-3



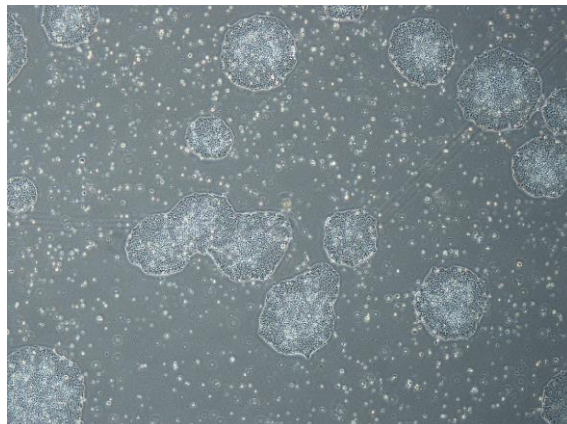
CiRA-j-1302-D: passage-3



CiRA-j-1302-E: passage-3



CiRA-j-1302-F: passage-3



( All images were captured at 4x magnification )